

CREW BARRIER INTERMEDIATE, KIT INSTALLATION INSTRUCTIONS

MODELS: BELL 429

Read all of the Instructions for Continuing Airworthiness
thoroughly prior to performing any activities relating to this product

Table of Contents

<u>SECTION</u>	<u>DESCRIPTION</u>	<u>PAGE</u>
1	Description	2
2	Installation & Removal Instructions	3
	Applicability	3
	Installation Instructions	4
	Removal Instructions	10

Notes

1. If changes to this document are required, Alpine Aerotech LP shall revise all pages and reissue the entire document.
2. Alpine Aerotech LP shall make any subsequent revisions of this document available free of charge upon request. Alpine Aerotech LP also recommends that the end user of this product periodically verify the revision level of this document.

SECTION 1 DESCRIPTION

The following information provides a functional description of the Crew Barrier Intermediate, Kit as defined in Alpine Aerotech LP authority dataset AAL-491-010-001.

The AAL Crew Barrier Intermediate, Kit allows for the rapid installation of a non-permeable barrier between the crew and passenger compartments. This provides protection for the flight crew and passengers against droplet borne transmission of pathogens. The installation can be accomplished in the field with minimal hand tools. Removal takes less than a minute to allow for decontamination protocols outside of the aircraft.

SECTION 2 INSTALLATION & REMOVAL INSTRUCTIONS

Applicability

The Crew Barrier Intermediate, (AAL-491-010-001) is applicable to Bell 429 all serial numbers OEM interior.

Weight & Balance

<u>Part Number</u>	<u>Description</u>	<u>Weight</u>	<u>Long. Arm</u>	<u>Lat. Arm</u>
AAL-491-010-001	Crew Barrier Intermediate, Kit	2.00*	168.00 (STA)	0.00 (BL)
		0.91 (Kg)	4.267 (m)	0.00 (m)

* Represents total weight of applicable kit only. Recalculate C of G as appropriate.

General Notes

1. All Installation Instructions shall be accomplished in accordance with (IAW) standard aircraft practices. Refer to the current revision of the FAA Advisory Circular AC 43.13-1 and AC 43.13-2 for details on standard aircraft practices.
2. All dimensions are in imperial measures (inches/pounds).
3. Refer to ICA document AAL-491-015-701, Section 4: Maintenance Instructions for instructions on maintenance for the item(s) referenced within this section.
4. Refer to ICA document AAL-491-015-701, Section 9: Illustrated Parts Breakdown for the part numbers of the item(s) referenced within this section.

Installation Instructions

1. Gain access to the pilot and co-pilot seatback area of the aircraft in the STA 168.00 rollover bulkhead area, and make the aircraft ready for maintenance.
2. Assess the surfaces of the pilot and co-pilot seatback area and note any installed equipment that may need to be adjusted or temporarily removed to install the Velcro®, Loop (Item 7).

NOTE

The method shown in the following instructions should be considered optimal, but variations to accommodate existing aircraft configurations are permissible.

3. Ensure that all of the plastic and/or painted sheet metal surfaces in the installation area are thoroughly cleaned and degreased using isopropyl alcohol.
4. Dry fit the Crew Barrier Intermediate, Assy (Item 1) along the ceiling and wall portion of the 168.00” rollover bulkhead and mark out the final location surfaces using masking tape or some other temporary method.



Figure 1
LKG FWD
Crew Barrier Intermediate, Assy (Item 1)
Dry fit shown.

Installation Instructions

5. Peel up the backing from one end the Velcro®, Loop and apply the Velcro®, Loop (Item 7) to the interior of the aircraft starting at the lower outboard corner. Use the temporary marks made in Step 4 as a guide and peel away the backing as you move along, trim the length of the Velcro®, Loop (Item 7) to suit. It is permitted to cut the Velcro into shorter, more manageable lengths to ease installation. It is also recommended to cut the Velcro®, Loop at joints between adjacent interior panels to make future removal of interior panels possible. Reference Figure 2.

NOTE

The PSA (Pressure Sensitive Adhesive), obtains the best adhesion if it has a hard roller or firm pressure applied during application. 80% of maximum adhesion is obtained after 1 hour. A 100% cure is achieved after 30 hours.



Figure 2
LKG INBD

Velcro®, Loop (Item 7) Installation shown.

Installation Instructions

6. Starting at one the upper outboard corner of the rollover bulkhead, begin fastening the Crew Barrier Intermediate, Assy, (Item 1) to the Velcro®, Loop (Item 7) and working across the roof from one side to the other. Apply firm pressure to fasten the hook and loop together. Ensure Crew Barrier Intermediate, Assy (Item 1) is centered. Reference Figure 3.



Figure 3
LKG FWD

Crew Barrier Intermediate, Assy (Item 1) Installation Shown

Installation Instructions

7. Once the roof portion is attached, start at the upper outboard corners and attach the wall portions of the Crew Barrier Intermediate, Assy, (Item 1), to the Velcro®, Loop (Item 7) and continue securing it all the way down the LH & RH rollover bulkhead pillars. Reference Figure 4.



Figure 4
LKG FWD
Crew Barrier Intermediate, Assy (Item 1) Installation Shown

Installation Instructions

8. Once the ceiling and wall portions are attached, grasp the center Velcro collar tab of the Crew Barrier Intermediate, Assy, (Item 1), position it on the floor just AFT of the document rack. Pull aft, while maintaining contact with the floor until the excess material just gets taut. Mark the location of the 3 Velcro tabs as in step 4. Reference Figure 5.

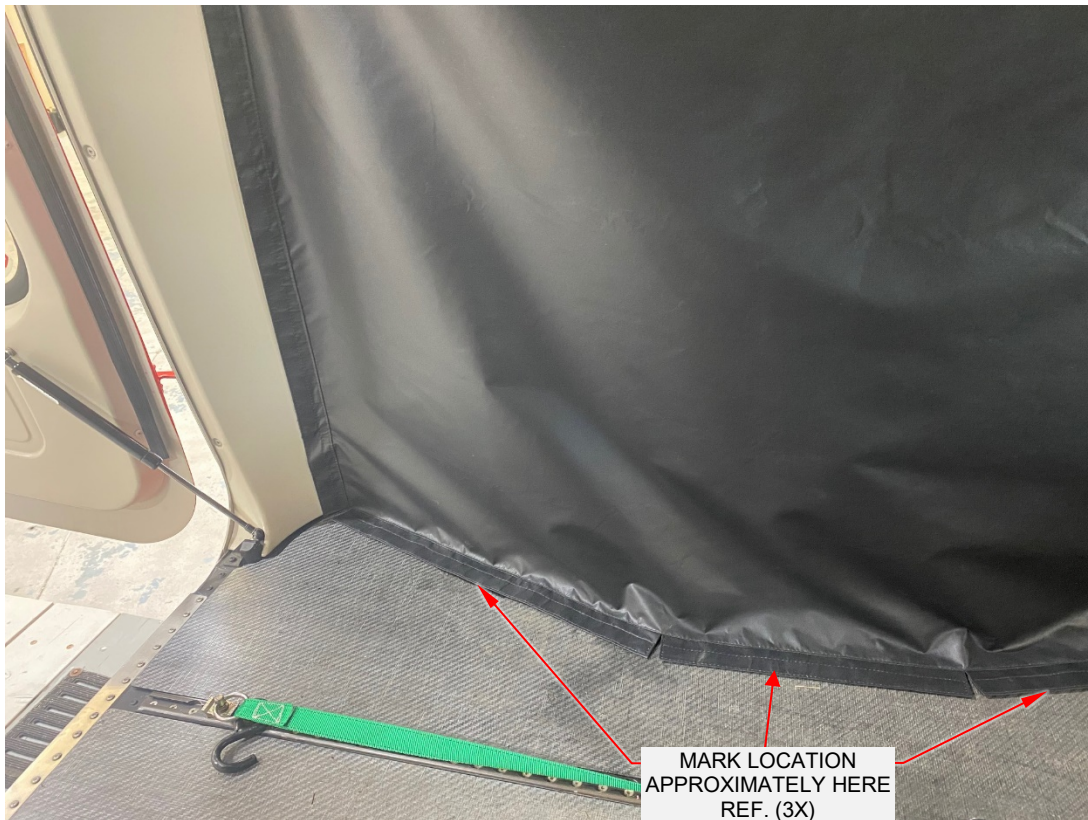


Figure 5
LKG FWD
Crew Barrier Intermediate, Assy (Item 1) Floor Installation Shown

Installation Instructions

9. Peel up the backing from one end the Velcro®, Loop and apply the Velcro®, Loop (Item 7) to the floor of the aircraft starting at the lower outboard corner. Use the temporary marks made in Step 8 as a guide and peel away the backing as you move along, trim the length of the Velcro®, Loop (Item 7) to suit. It is permitted to cut the Velcro into shorter, more manageable lengths to ease installation.
10. Secure the Crew Barrier Intermediate, Assy, (Item 1) to the Velcro®, Loop (Item 7) along the floor. Reference Figure 6.

NOTE

Installation to aircraft floor is recommended, but optional.



Figure 6
LKG FWD

Crew Barrier Intermediate, Assy (Item 1) Installation Shown

11. Update the aircraft logbook for the installation of the Crew Barrier Intermediate, Kit.
12. Installation complete.

Removal Instructions

1. Remove all components associated with the Crew Barrier Intermediate, Kit.
2. Grasp the red webbing in the upper outboard corners, where it is attached to the roof and pull down. Continue separating the Velcro using care not to damage the stitching and remove the Crew Barrier Intermediate, Assy, (Item 1). This operation is best performed from the passenger area but can be performed from either the crew or the passenger areas.
3. Peel and remove the Velcro®, Loop (Item 7) from the interior panel surfaces and the seatbacks and clean off any residual adhesive. It is permitted to leave the Velcro®, Loop (Item 7) in place if the operator chooses.
4. Perform a General Inspection of all items to ensure proper removal.
5. Update the aircraft logbook for the removal of the Crew Barrier Intermediate, Kit.